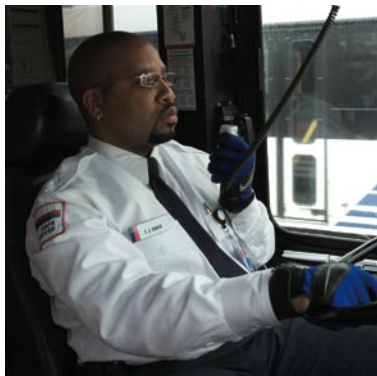
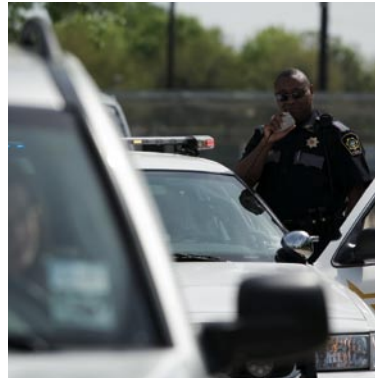


PM1500™ Professional Series Two-Way Mobile Radio and Accessories

Strengthening The Link: Two-Way Mobile Radio
for a Stronger, More Efficient Community



PM1500 Professional Series

Two-Way Mobile Radio and Accessories

Welcome to the Community!

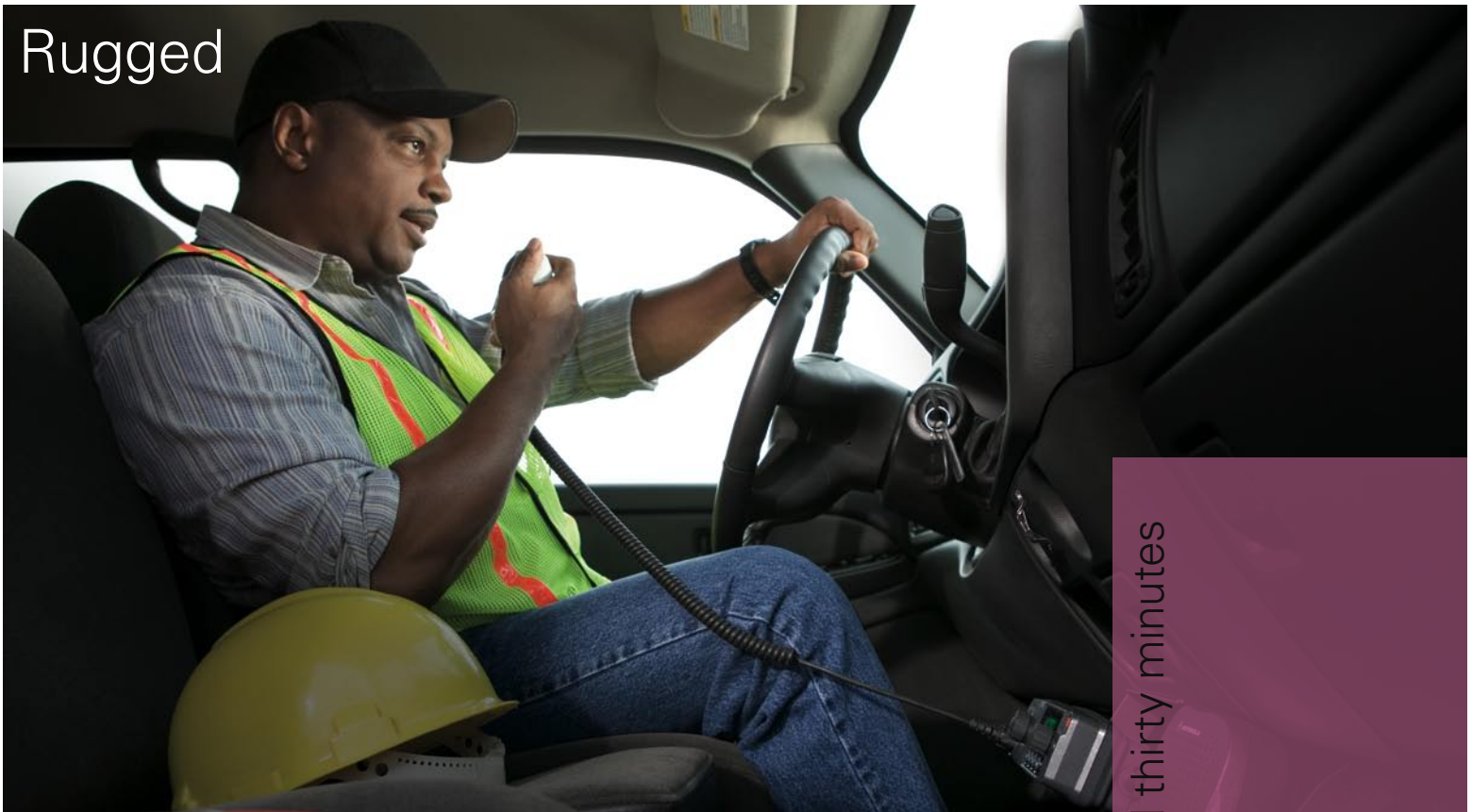
Safety, productivity, and efficiency demand reliable communications. Challenges increase across wide areas and in communities that are growing geographically. For the people who make government and commercial institutions work, staying linked is a vital need.

It's specifically for public safety, public works, utility, transportation and construction professionals that Motorola has designed the PM1500 Professional Series two-way mobile radio. The PM1500 offers durability, extensive signaling, and a standard external speaker for users who deal with tough, loud conditions and depend on clear communications.

This brochure will detail all the performance features of the PM1500 and its many useful accessories. Your Motorola Authorized Dealer or Representative can give you all the information you need, and help you choose the right products and accessories for your organization.



Rugged



What sets the PM1500 apart

Motorola has taken all the features you expect in a two-way mobile radio and elevated them to a greater level of performance in the new PM1500. Experienced mobile radio users will appreciate its advantages, enhancements, and high-quality design.

The PM1500:

- Offers a robust solution for your long-range communications needs with 110 watts of power.
- Delivers clear, crisp sound in loud environments through its 7.5 watt external speaker.
- Includes user-friendly icons in the backlit alphanumeric display, for viewing status, features, channel names, and Caller ID.
- Meets the highest U.S. military specifications of any mobile radio in the Motorola Professional Radio Series.
- Comes with the backing of Motorola service and a two-year warranty.

Did you know? The PM1500 is designed to withstand thirty minutes of steady rainfall and wind.

PM1500

Quality that delivers
in tough conditions

255 Channels

Multicolored LED Indicators

1- Large Channel and Push Button

On/Off Volume Knobs

2- Backlit 8-Character Alphanumeric Display

User friendly icons and soft menu so you easily view status and access features. Display for viewing of channel names and Caller ID

3- Programmable Emergency Button

Alerts dispatcher in an emergency situation

4- 4 Programmable Buttons

Easy access to favorite features. Optional keypad microphone allows you to scroll through the menu and access up to 16 programmable features

5- 7.5 Watt External Speaker

Allows for clear, crisp communication in loud environments

P25 Conventional Upgradeable



PM1500 Additional Features

Quik-Call II™, MDC1200 and DTMF Signaling

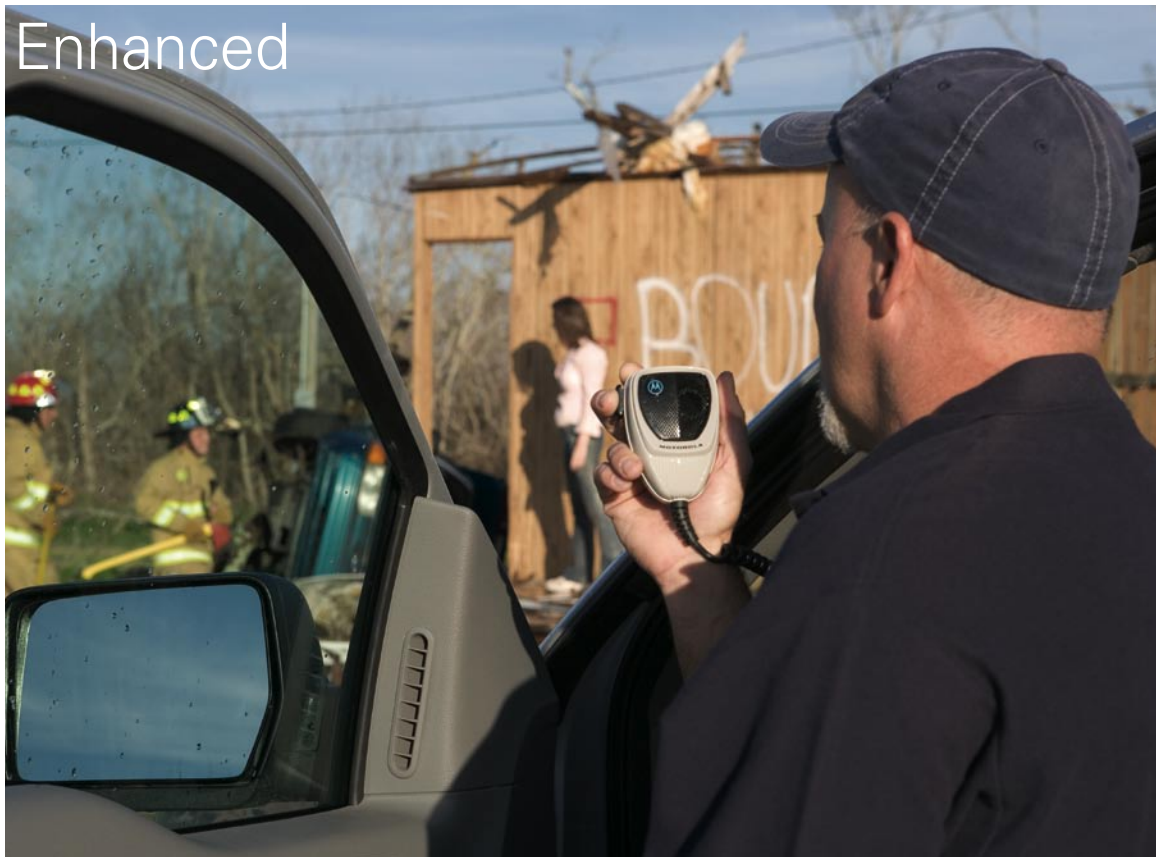
Send and receive information in a variety of ways including:

- **Selective Call** Send and receive calls from a specific group or individual
- **Call Alert** Send and receive alerts of incoming calls

MDC1200 Signaling Only Features:

- **Push-to-Talk ID** Identify your calls
- **Emergency (Encode/Decode)** Alerts dispatcher in urgent situations
- **Status/Message (Encode)** Allows radio to send preprogrammed messages
- **Selective Radio Inhibit (Decode)** Allows system owner to disable stolen or missing radios
- **Radio Check (Decode)** Lets others check your radio status

Enhanced



PM1500 Programmable Features

Customers can choose up to 16.
Top features include:

Emergency

Alerts dispatcher in urgent situations

Repeater Talkaround

Unit-to-unit communication, bypassing the repeater

Scan

Monitors the scan list channels for any activity

Zone Up/Down

Allows you to select alternate zones

Dim

Sets illumination level of the display

Nuisance Channel Delete

Temporarily deletes a specific channel from your scan mode if you no longer want to hear activity

Standard Package

Palm Microphone

7.5 Watt External Speaker

Mounting Hardware

20 Ft. Power Cable

17 Ft. Remote Mount Cable

Ignition Sense Cable

User Guide CD

2-Year Standard Warranty

Did you know? PM1500 radios are specified to withstand more environmental forces than any other mobile radio in Motorola's Professional Radio Series.

Did you know? PM1500 radios meet more rugged military specifications than any other mobile radio in Motorola's Professional Radio Series.



Accessories for the PM1500: Customizing the capabilities of your radio

Motorola Original Accessories help you get the most from your two-way mobile radio, so your organization can optimize performance and achieve the best communication solution for your needs. To assure quality, Motorola accessories are system-tested with Motorola radios. Your Motorola Authorized Dealer or Representative can assist you in selecting the right accessories for your users and environment. The accessories shown on the opposite page represent a selection of the products that are available; contact us to choose from the complete range of items.



Motorola Original – When an accessory is purchased with this seal, it certifies a Motorola Original[®] Accessory. These high-quality accessories allow your customers to properly charge and safely transport the Professional Series radios. Motorola Original Accessories carry a one-year limited warranty.

PM1500 Accessories



Microphones

To manage menus and converse conveniently
Product featured – HMN4079C

Speakers

Ideal for extremely noisy environments
Product featured – HSN4038A

Power Cables

Providing power to suit your needs
Product featured – HKN4192B

Switches

Footswitches improve operating convenience and safety
Product featured – HLN5113B

Miscellaneous

External alarm cable for added security
Product featured – HKN4258C

Antennas

Optimize range and quality for different configurations
Product featured – HAD4007A

Mountings

For added convenience, protection from theft, and quick release

Remote Mounting Cables

To work with your mobile application

Programming

CPS and cables



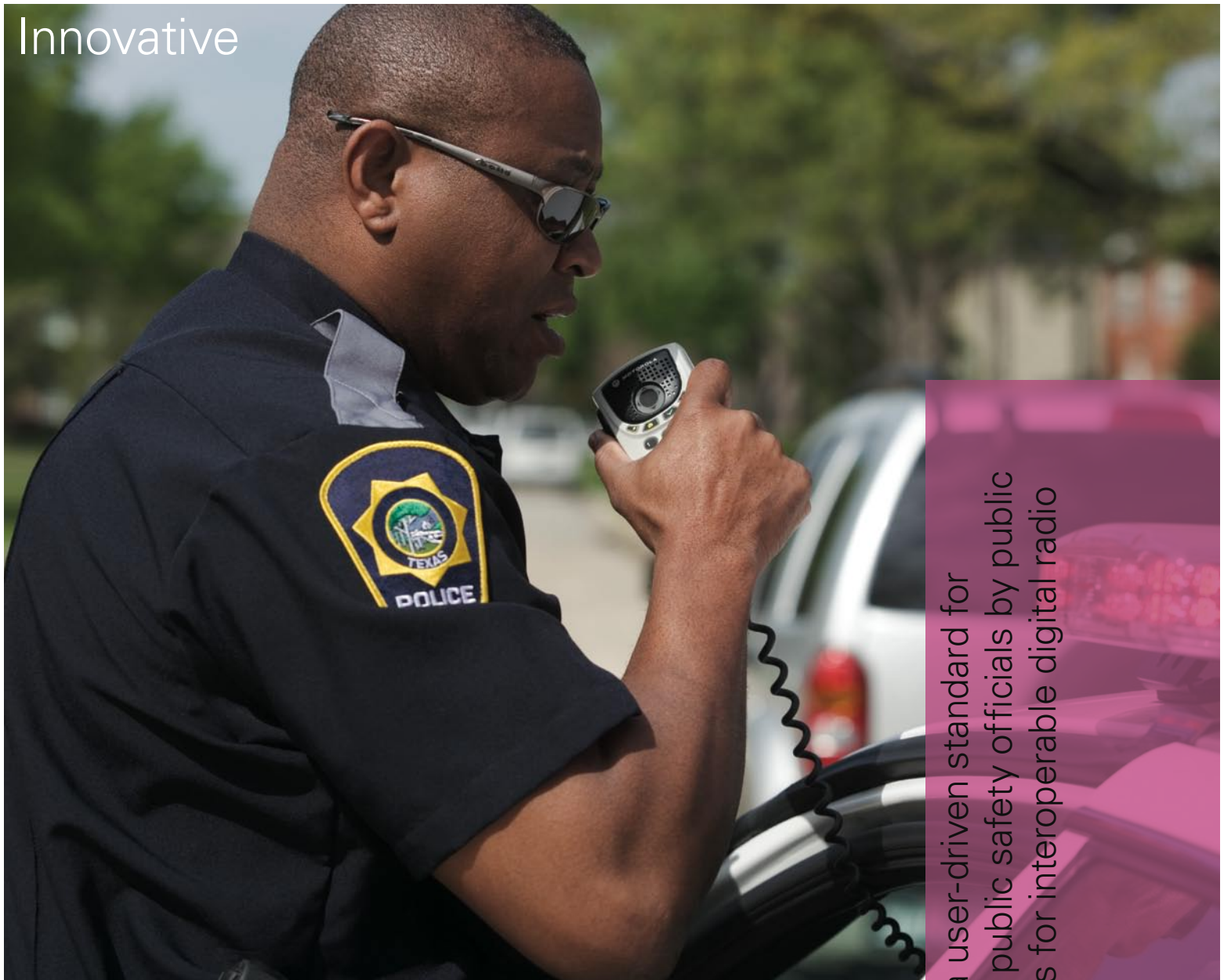
PM1500: A bridge to P25 interoperability

Today a wireless network must serve two communities: one of day-to-day hometown needs and the broader community ready to collaborate in case of severe emergencies.

The Motorola PM1500 spans the needs of both communities with enhanced technology and advanced user features. In addition, the PM1500 is P25 Conventional Upgradeable via software download, able to interact with other networks in times of crisis.

Thanks to this capability, communities purchasing the new PM1500 radios can apply for and use Homeland Security funding grants.





A commitment to security

Many communities have taken steps to dramatically upgrade their communication infrastructure in order to meet these new standards.

With the PM1500, a single software upgrade makes this radio P25 interoperable. This interoperability provides users the ability to interact with other networks when needed.

It allows communities to transfer at their own pace and use their budget resources wisely to serve all aspects of public safety, utility, transportation and construction.

Check with your Motorola Authorized Dealer or Representative for more information.

Did you know? Project 25 (P25) is a user-driven standard for interoperability. It was developed for public safety officials by public safety officials and provides the basis for interoperable digital radio voice and data communication.

PM1500

Specifications



Exceptional Durability

There's a reason why Motorola two-way radios are so rugged and reliable. Each radio undergoes rigorous testing in the design process, so your customers can be assured Motorola radios will hold up under demanding conditions. These tests are designed to simulate very harsh environments, including:

GENERAL SPECIFICATIONS

	UHF	VHF
Frequency Range	380-470 MHz	136-174 MHz
Channel Bandwidth	12.5/25 kHz	

TRANSMITTER

	UHF	VHF		
Frequency Range	380-470 MHz	136-174 MHz		
RF Power	25-110W	25-110W		
Maximum Frequency Separation	Ref Above Bandsplit	Full Bandsplit		
Frequency Stability Operating Frequency Accuracy (-30C to +60C; +25C Ref) – UHF (+/- 2ppm (-30C to +60C) – VHF	2 ppm	2.5 ppm		
Modulation Limiting 25 kHz channel 12.5 kHz channel	+5 kHz +2.5 kHz	+5 kHz +2.5 kHz		
Channel Spacing Analog	12.5/25 kHz	12.5 kHz		
FM Hum and Noise 25 kHz 12.5 kHz	45 dB 40 dB	50 dB 40 dB		
Emissions	Conducted -85 dBc	Radiated -20 dBc	Conducted -85 dBc	Radiated -85 dBc
Audio Response (6dB/Octave Pre-emphasis from 300 to 3000 Hz)	+1, -3 dB (EIA)		+1, -3 dB (EIA)	
Audio Distortion per EIA	2%		2%	

RECEIVER

	UHF	VHF
Frequency	12.5/25 kHz	12.5 kHz
Channel Spacing	12.5/25 kHz	12.5 kHz
Maximum Frequency Separation	Full Bandsplit	Full Bandsplit
Analog Sensitivity 20 db Quieting 12 db SINAD per EIA	0.25µV 0.40µV 0.20µV 0.30µV	0.25µV 0.40µV 0.20µV 0.30µV
Intermodulation	80 dB 85 dB	85 dB 85 dB
Spurious Response Rejection	90 dB 90 dB	90 dB 90 dB
Audio Output Power at 3% distortion	7.5W (ext. speaker)	7.5W (ext. speaker)
Adjacent Channel Rejection Selectivity (12.5 kHz/25 kHz)	75 dB 82 dB	85 dB 85 dB

MOBILE

Dimensions Control Head	2.56" x 7.22" x 3.38" (65 x 183.5 x 85.8 mm)
High Power Radio Transceiver	2.765" x 8.08" x 12.31" (70.2 x 205.2 x 312.7 mm)
Weight Control Head	6.1lbs (2.77 kg)
High Power Radio Transceiver	8.8lbs (3.99 kg)

SPEAKER

Dimensions	5.5" x 5.5" x 2.5" (139.7 x 139.7 x 63.5 mm) (Excluding mounting bracket)
Weight	1.5lbs (0.68 kg)

Rain – steady rainfall and wind for 30 minutes on every surface. Ideal for agriculture, light construction, utility and public administration personnel who work outdoors in any type of weather.

Salt Fog – 48 hours of exposure to an atomized salt solution. Hospitality staff, utility workers and public administration personnel working near oceans or around winter salt applications will appreciate our radios' resistance to salt corrosion.

Dust – 6 hours of blowing dust on all surfaces. Ideal for agriculture, light construction, utility and public administration workers who are exposed to a variety of dusty environments.

Vibration – up to 9 hours of exposure to vibration that simulates the rigors that a radio could undergo while being transported. Because these mobile radios are installed in vehicles, it's important they hold up to extensive vibration tests. Light construction and industrial workers, agriculture, utility and public administration staff expect a radio to withstand any vibrations.

Shock – 18 shocks with a minimum G force of 40 Gs each makes these mobile radios ideal for light construction and light industrial, agriculture, public administration, utilities and anyone who has ever dropped a radio.

POWER AND BATTERY DRAIN

Model Type	136-174 MHz	380-470 MHz
Minimum RF Power Output	25-110 Watt (136-174 MHz)	25-110 Watt (380-470 MHz)
Operation	12V DC Negative Ground	
Standby at 13.8V 136-174 MHz	0.5A-0.7A	
380-470 MHz	0.65A-0.85A	
Receive at Rate Audio at 13.8V 136-174 MHz	1.3A-3.0A	
380-470 MHz	1.5A-3.2A	

ENVIRONMENTAL SPECIFICATIONS

Operating Temperature	-30°C / +60°C
Storage Temperature	-40°C / +85°C
International Protection	IP54 certified

FCC TYPE ACCEPTANCE ID

TRANSMITTER POWER

Band	136-174 MHz	380-470 MHz
Output	25-110 W	25-110 W
Number	AZ492FT3808	AZ492FT4870
Model	AAM79QTD9PW5_N	AAM79KTD9PW5_N

Accelerated Life Test

Motorola's Accelerated Life Test (ALT) is a developmental process of rigorous laboratory testing that simulates years of field use. Motorola has a firm commitment to quality and reliability. These radios have been designed, manufactured and tested to achieve high levels of component and workmanship quality. Motorola radios are designed to minimize costly repairs and downtime.

PORTABLE MILITARY STANDARDS 810 C, D, E & F

	MIL-STD 810C		MIL-STD 810D		MIL-STD 810E		MIL-STD 810F	
	Method	Proc./Cat.	Method	Proc./Cat.	Method	Proc./Cat.	Method	Proc./Cat.
Low Pressure	500.1	I	500.2	II	500.3	II	500.4	II
High Temperature Storage	501.1	I	501.2	I/A1	501.3	I/A1	501.4	I/Hot
High Temperature Storage	501.1	II	501.2	II/A1	501.3	II/A1	501.4	II/Hot
Low Temperature Storage	502.1	I	502.2	I/C3	502.3	I/C3	502.4	I/C3
Low Temperature Operational	502.1	I	502.2	II/C1	502.3	II/C1	502.4	II/C1
Temperature Shock	503.1	-	503.2	I/A1-C3	503.3	I/A1-C3	503.4	I/Hot-C3
Solar Radiation	505.1	II	505.2	I	505.3	I	505.4	I
Rain Blowing	506.1	I	506.2	I	506.3	I	506.4	I
Rain Steady	506.1	II	506.2	II	506.3	II	506.4	III
Humidity	507.1	II	507.2	II	507.3	II	507.4	-
Salt Fog	509.1	-	509.2	-	509.3	-	509.4	-
Blowing Dust	510.1	I	510.2	I	510.3	I	510.4	I
Blowing Sand			510.2	II	510.3	II	510.4	II
Vibration Minimum Integrity	514.2	VIII/F, Curve-W	514.3	I/10	514.4	I/10	514.5	I/24
Vibration Loose Cargo			514.3	II/3	514.4	II/3	514.5	II/5
Shock Functional	516.2	I	516.3	I	516.4	I	516.5	I
Shock Crash Hazard	516.2	III	516.3	V	516.4	V	516.5	V
Shock Bench Handling	516.2	V	516.3	VI	516.4	VI	516.5	VI

For more information, please contact:



MOTOROLA

Motorola, Inc.

1313 E. Algonquin Road
Schaumburg, Illinois 60196 U.S.A.
1-800-422-4210

www.motorola.com

MOTOROLA and the Stylized M Logo are registered in the U.S. Patent and Trademark Office. All other product or service names are the property of their registered owners. © Motorola, Inc. 2006

MD-EUPM1500BROCH

05/06